

# C6Amodul / C6Amodul K

AWG 26/1 - 22/1, AWG 26/7 - 22/7

- (DE) Montagehinweis für den Installateur
- (EN) Mounting note for the installer
- (FR) Notice d'installation pour l'installateur

## i HINWEIS / NOTE / NOTICE



- (DE) Anschlussfehler vermeiden!  
Vor dem Anschluss Montageanleitung sorgfältig lesen!
- (EN) Avoid connection errors!  
Read installation instructions carefully before connecting!
- (FR) Eviter des erreurs de raccordement !  
A lire attentivement avant de procéder au raccordement !



Modul  
130B11-E 180°



(DE)



(EN)



(FR)



Keystone  
130B21-E 180°



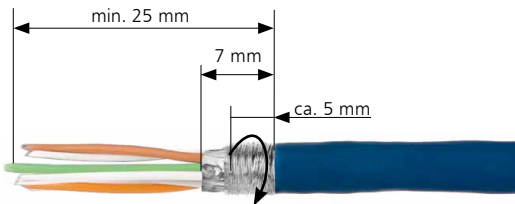
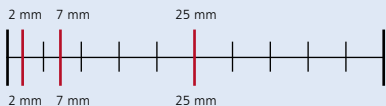
(DE)



(EN)

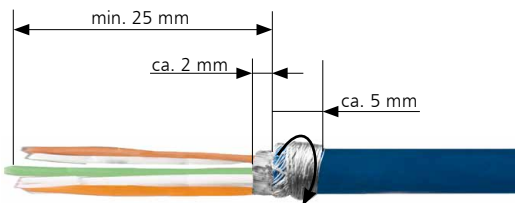


(FR)



## i HINWEIS / NOTE / NOTICE

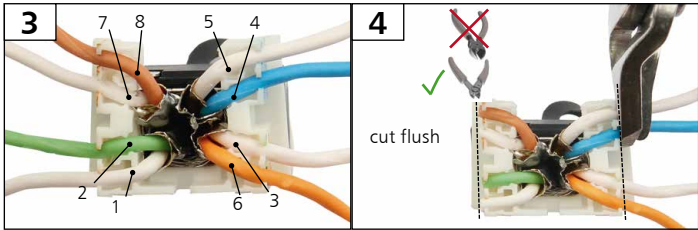
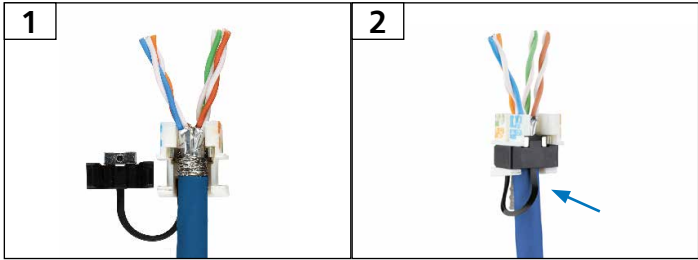
- (DE) **Kabel AWG 22/23!**  
Folienschirm 7 mm stehen lassen.  
Schirmgeflecht 5 mm über den Folienschirm drehen.
- (EN) **Cable AWG 22/23!**  
Leave 7 mm of the foil shield. Wrap the braided shield 5 mm over the foil shield.
- (FR) **Câble AWG 22/23 !**  
Laisser 7 mm du blindage en feuille. Enrouler le blindage tressé 5 mm autour du blindage en feuille.



## i HINWEIS / NOTE / NOTICE

- (DE) **Kabel AWG 26!**  
Schirmgeflecht 5 mm über den Kabelmantel aufbringen.
- (EN) **Cable AWG 26!**  
Wrap the braided shield 5 mm over the cable sheath.
- (FR) **Câble AWG 26 !**  
Enrouler le blindage tressé 5 mm autour du gainage.

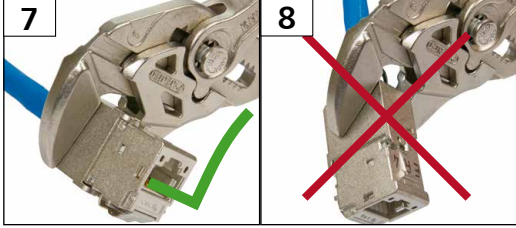
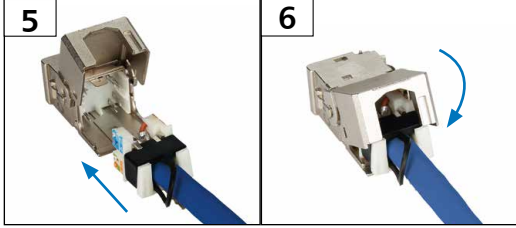
- DE** Kabelmontage T568A
- EN** Cable termination T568A
- FR** Installation d'un câble T568A



Anschlussbelegung PIN assignments Affectation des fils aux contacts			
PIN Nr. No.	T568A	T568B	Profinet
1	WH-GN	WH-OG	YE
2	GN	OG	OG
3	WH-OG	WH-GN	WH
4	BU	BU	-
5	WH-BU	WH-BU	-
6	OG	GN	BU
7	WH-BN	WH-BN	-
8	BN	BN	-

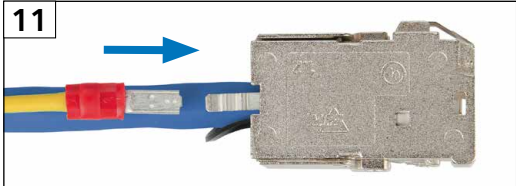
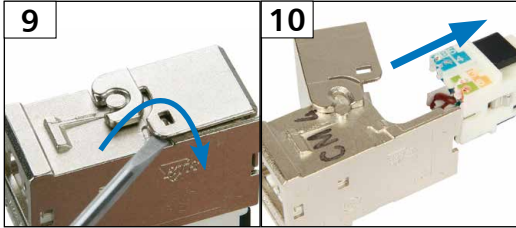
**!** Nicht schräg einstecken!  
Do not plug diagonally!  
Ne pas insérer en diagonally !

- DE** Schließen des Moduls bei Verwendung von Werkzeug
- EN** Closing the module by using a tool
- FR** Fermeture du module en utilisant un outil



- DE** Demontage
- EN** Disassembly
- FR** Démontage

- DE** Potentialausgleich
- EN** Potential equalisation
- FR** Compensation de potentiel



Optionaler Potentialausgleich mit 2,8 mm Flachstecker  
Optional potential equalisation with 2.8 mm flat plug  
Compensation de potentiel optionnelle par languette à 2,8 mm