



fitted with

- work equipment
- connected load
- power consumption
- luminous flux
- luminous efficacy
- light distribution
- Beam Angle
- light colour
- color rendering index (CRI)
- system of protection
- class of protection
- technology
- usage
- luminaire body
- lamp cover
- weight (net)
- mains supply

- design
- fastening
- dimension
- special features

LED

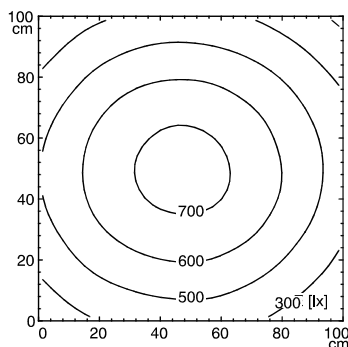
- Energy efficiency category A+
- without
- 20-28V; DC
- approx. 16 W
- approx. 1680 lm
- approx. 105 lm/W
- direct, wide-angled beam
- C0-C180: 90° / C90-C270: 100°
- neutral white, approx. 5000 K
- > 80
- IP 67
- III
- switchable
- external
- aluminium, anodised, aluminium coloured anodised
- screen, clear
- approx. 0.8 kg
- built-in plug
- RSFM 4/0.5M
- mounted version
- L-angle, clamp
- A=540 mm
- angle of illumination 90°



RSFM 4/0.5M

illuminance

Distance: 100 cm
Em: 541 lx
Emax: 732 lx
Emin: 326 lx



luminous intensity

