



**light source**

- work equipment**
- connected load**
- Power consumption**
- luminous flux**
- luminous efficacy**
- light distribution**
- colour temperature**
- color rendering index (CRI)**
- glare control**
- System of protection**
- class of protection**
- technology**
- operation**
- luminaire body**
- weight (net)**
- mains supply**

- Fastening**
- dimension**
- light output**
- outside diameter**
- side part**
- special features**

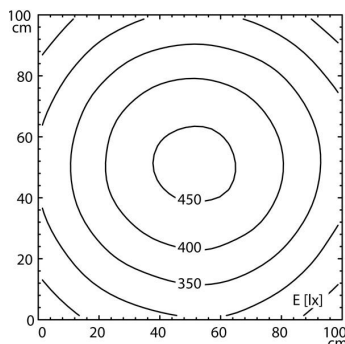
- LED
- Energy efficiency category A+
- without
- 22-26 V; DC
- approx. 19 W
- approx. 1400 lm
- approx. 73 lm/W
- direct
- neutral white, approx. 5000 K
- > 80
- diffuser foil
- IP 67
- III
- switchable
- external
- polycarbonate (PC), clear,
- approx. 1.4 kg
- built-in plug
- ST16/2 BS
- pipe clamp (accessory)
- A=510 mm
- D=456 mm
- 70 mm
- A with screwed cable gland
- light forming



ST16/2 BS

**illuminance**

distance: 100 cm  
**Em:** 355 lx  
**Emax:** 462 lx  
**Emin:** 239 lx



**luminous intensity**

