

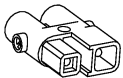


fitted with

work equipment
connected load
power consumption
luminous flux
luminous efficacy
light distribution
light colour
color rendering index (CRI)
system of protection
class of protection
usage
luminaire body
weight (net)
mains supply

fastening
dimension
light output
outside diameter
side part
special features

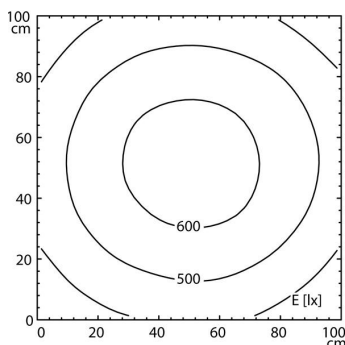
LED
 Energy efficiency category A+
 without
 22-26 V; DC
 approx. 25 W
 approx. 1900 lm
 approx. 76 lm/W
 direct
 neutral white, approx. 5000 K
 > 80
 IP 67
 III
 external
 borosilicate glass,
 approx. 2.2 kg
 built-in plug
 ST16/2 BS
 pipe clamp (accessory)
 A=650 mm
 D=596 mm
 70 mm
 A with screwed cable gland
 light forming



ST16/2 BS

illuminance

distance: 100 cm
Em: 505 lx
Emax: 646 lx
Emin: 341 lx



luminous intensity

