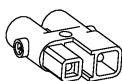




fitted with
work equipment
connected load
Power consumption
luminous flux
luminous efficacy
light distribution
light colour
color rendering index (CRI)
Glare-free
System of protection
class of protection
technology
usage
luminaire body
weight (net)
mains supply

Fastening
dimension
light output
outside diameter
side part
special features

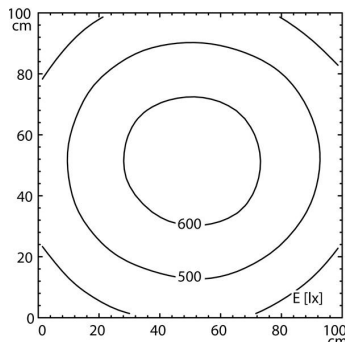
LED
Energy efficiency category A+
without
22-26 V; DC
approx. 25 W
approx. 1900 lm
approx. 76 lm/W
direct
neutral white, approx. 5000 K
> 80
diffuser foil
IP 67
III
switchable
external
acrylic (PMMA), clear,
approx. 1.8 kg
built-in plug
ST16/2 BS
pipe clamp (accessory)
A=650 mm
D=596 mm
70 mm
A with screwed cable gland
light forming



ST16/2 BS

illuminance

distance: 100 cm
Em: 505 lx
Emax: 646 lx
Emin: 341 lx



luminous intensity

