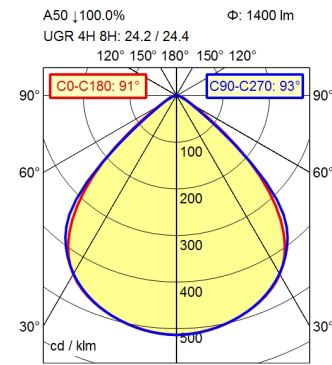
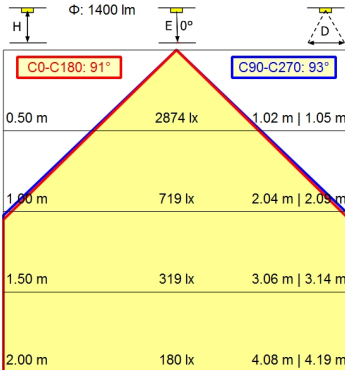
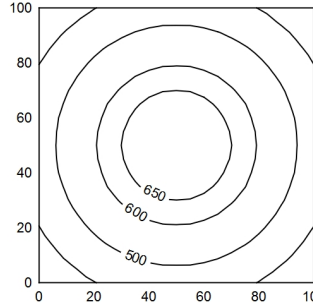


M12-A-5



100 x 100 cm  $\Phi: 1400 \text{ lm}$   
 Em: 534 lx  
 Emax: 695 lx  
 Emin: 362 lx



- light source
- work equipment
- connected load
- power consumption
- luminous flux
- luminous efficiency
- light distribution
- beam angle
- colour temperature
- colour temperatur
- color rendering index (CRI)
- chromaticity tolerance LED
- glare control
- luminance (L65)
- unified glare rating (4H 8H)
- system of protection
- class of protection
- technology
- operation
- housing
- cover
- weight (net)
- mains lead
- fastening
- dimension
- special features

- LED
- without
- 24 V, DC
- env. 12 W
- approx. 1.400 lm
- approx. 117 lm/W
- direct
- 91°
- neutral white
- approx. 5.000 K
- $\geq 80$
- $< 3$  SDCM
- screen
- $\leq 11000 \text{ cd/m}^2$
- $\leq 25$
- IP 67
- III
- multi-stage switchable
- external
- aluminium; anodised; aluminium coloured
- anodised
- glass screen
- env. 0,57 kg
- built-in plug; M12-A-5
- snap-fit
- A=215 mm
- ADVANCED package

Surface-mounted luminaire ACURIA.perfect  
APA 1400/850/MS  
114310000-00806668

---