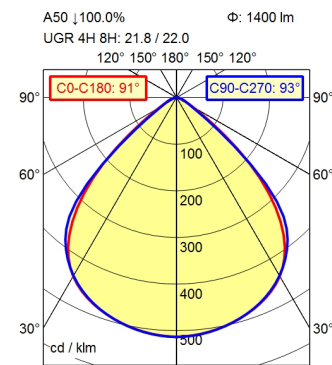
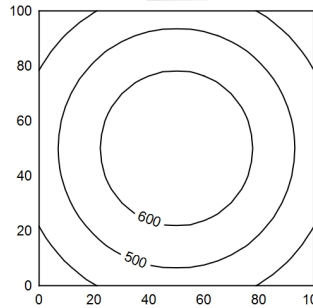


M12-A-5



100 x 100 cm Φ : 1400 lm
 Em: 530 lx
 Emax: 685 lx
 Emin: 360 lx
 = 100 cm



H	Φ : 1400 lm	E 0°	D
0.50 m	2874 lx	1.02 m 1.05 m	
1.00 m	719 lx	2.04 m 2.08 m	
1.50 m	319 lx	3.06 m 3.14 m	
2.00 m	180 lx	4.08 m 4.19 m	

- light source
- work equipment
- connected load
- power consumption
- luminous flux
- luminous efficiency
- light distribution
- beam angle
- colour temperature
- colour temperatur
- color rendering index (CRI)
- chromaticity tolerance LED
- glare control
- luminance (L65)
- unified glare rating (4H 8H)
- system of protection
- class of protection
- technology
- operation
- housing
- cover
- weight (net)
- mains lead
- fastening
- dimension
- special features

- LED
- without
- 24 V, DC
- env. 12 W
- approx. 1.400 lm
- approx. 117 lm/W
- direct
- 91°
- neutral white
- approx. 5.000 K
- >= 80
- < 3 SDCM
- screen
- <= 5200 cd/m²
- <= 22
- IP 67
- III
- multi-stage switchable
- external
- aluminium; anodised; aluminium coloured
- anodised
- glass screen
- env. 1,06 kg
- built-in plug; M12-A-5
- snap-fit
- A=390 mm
- ADVANCED package

Surface-mounted luminaire ACURIA.perfect
APA 1450/850/MS
114311000-00806645
