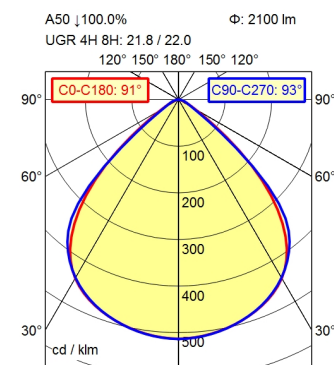
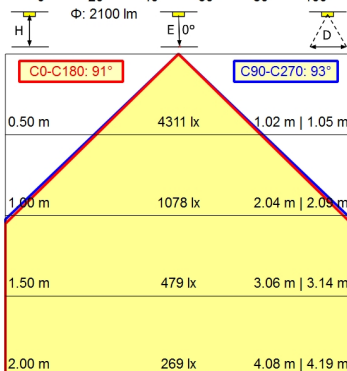
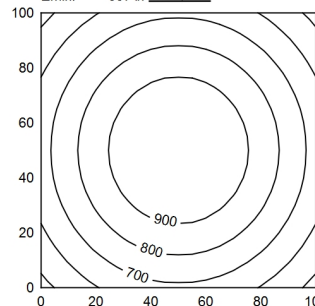


M12-A-5



100 x 100 cm       $\Phi$ : 2100 lm  
 Em: 783 lx  
 Emax: 1004 lx  
 Emin: 537 lx  
 = 100 cm



- light source
- work equipment
- connected load
- power consumption
- luminous flux
- luminous efficiency
- light distribution
- beam angle
- colour temperature
- colour temperatur
- color rendering index (CRI)
- chromaticity tolerance LED
- glare control
- luminance (L65)
- unified glare rating (4H 8H)
- system of protection
- class of protection
- technology
- operation
- housing
- cover
- weight (net)
- mains lead
- fastening
- dimension
- special features

- LED
- without
- 24 V, DC
- env. 17 W
- approx. 2.100 lm
- approx. 124 lm/W
- direct
- 91°
- neutral white
- approx. 5.000 K
- >= 80
- < 3 SDCM
- screen
- <= 5200 cd/m<sup>2</sup>
- <= 22
- IP 67
- III
- multi-stage switchable
- external
- aluminium; anodised; aluminium coloured
- anodised
- glass screen
- env. 1,55 kg
- built-in plug; M12-A-5
- snap-fit
- A=565 mm
- ADVANCED package

Surface-mounted luminaire ACURIA.perfect

APA 2200/850/MS

114312000-00806647

---

**Waldmann** 

ENGINEERS OF LIGHT