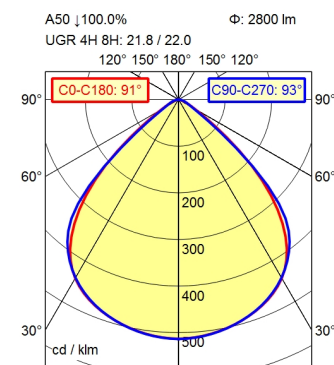
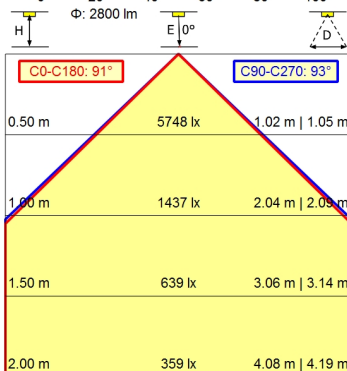
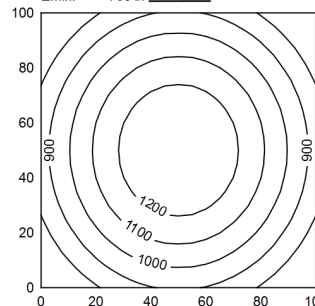


M12-A-5



100 x 100 cm Φ : 2800 lm
Em: 1022 lx
Emax: 1298 lx
Emin: 708 lx
= 100 cm



- light source
- work equipment
- connected load
- power consumption
- luminous flux
- luminous efficiency
- light distribution
- beam angle
- colour temperature
- colour temperatur
- color rendering index (CRI)
- chromaticity tolerance LED
- glare control
- luminance (L65)
- unified glare rating (4H 8H)
- system of protection
- class of protection
- technology
- operation
- housing
- cover
- weight (net)
- mains lead
- fastening
- dimension
- special features

- LED
- without
- 24 V, DC
- env. 22 W
- approx. 2.800 lm
- approx. 127 lm/W
- direct
- 91°
- neutral white
- approx. 5.000 K
- >= 80
- < 3 SDCM
- screen
- <= 5200 cd/m²
- <= 22
- IP 67
- III
- multi-stage switchable
- external
- aluminium; anodised; aluminium coloured
- anodised
- glass screen
- env. 2,03 kg
- built-in plug; M12-A-5
- snap-fit
- A=740 mm
- ADVANCED package

Surface-mounted luminaire ACURIA.perfect
APA 2900/850/MS
114313000-00806649
