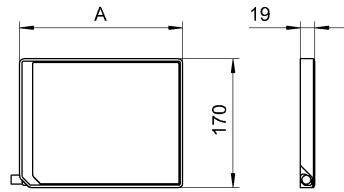
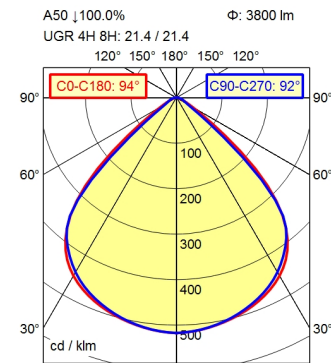


# Surface-mounted luminaire ACURIA.perfect APA 4000/850/MS

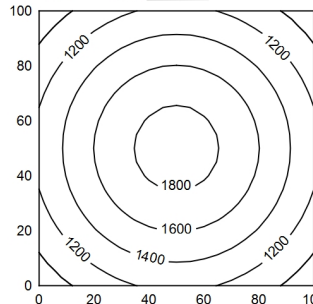
114315000-00806635



M12-A-5



100 x 100 cm  $\Phi$ : 3800 lm  
 Em: 1444 lx  
 Emax: 1865 lx  
 Emin: 984 lx



Height (m)	Beam Diameter (m)	Beam Diameter (m)   (m)	Intensity (lx)
0.50	1.07	1.03	7865
1.00	2.13	2.07	1966
1.50	3.20	3.10	874
2.00	4.27	4.13	492

- light source
- work equipment
- connected load
- power consumption
- luminous flux
- luminous efficiency
- light distribution
- beam angle
- colour temperature
- colour temperatur
- color rendering index (CRI)
- chromaticity tolerance LED
- glare control
- luminance (L65)
- unified glare rating (4H 8H)
- system of protection
- class of protection
- technology
- operation
- housing
- cover
- weight (net)
- mains lead
- fastening
- dimension
- special features

- LED
- without
- 24 V, DC
- env. 28 W
- approx. 3.800 lm
- approx. 136 lm/W
- direct
- 92°
- neutral white
- approx. 5.000 K
- >= 80
- < 3 SDCM
- screen
- <= 4200 cd/m<sup>2</sup>
- <= 22
- IP 67
- III
- multi-stage switchable
- external
- aluminium; anodised; aluminium coloured
- anodised
- glass screen
- env. 2,55 kg
- built-in plug; M12-A-5
- snap-fit
- A=390 mm
- ADVANCED package

Surface-mounted luminaire ACURIA.perfect

APA 4000/850/MS

114315000-00806635

---

**Waldmann** 

ENGINEERS OF LIGHT