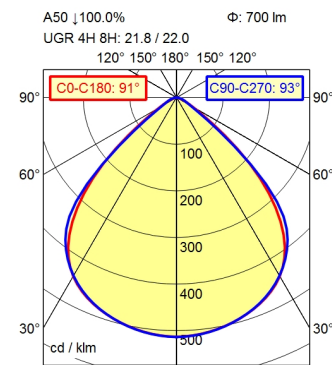
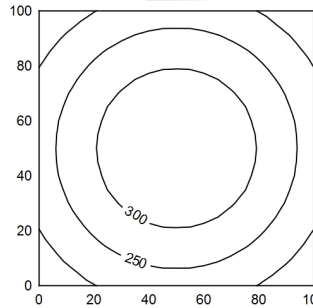


M12-A-5



100 x 100 cm Φ: 700 lm  
Em: 267 lx  
Emax: 347 lx  
Emin: 181 lx



Φ: 700 lm E: 0°

0.50 m	1437 lx	1.02 m   1.05 m
1.00 m	359 lx	2.04 m   2.08 m
1.50 m	160 lx	3.06 m   3.14 m
2.00 m	89.8 lx	4.08 m   4.19 m

- light source
- work equipment
- connected load
- power consumption
- luminous flux
- luminous efficiency
- light distribution
- beam angle
- colour temperature
- colour temperatur
- color rendering index (CRI)
- chromaticity tolerance LED
- glare control
- luminance (L65)
- unified glare rating (4H 8H)
- system of protection
- class of protection
- technology
- operation
- housing
- cover
- weight (net)
- mains lead
- fastening
- dimension
- special features

- LED
- without
- 24 V, DC
- env. 6 W
- approx. 700 lm
- approx. 117 lm/W
- direct
- 91°
- neutral white
- approx. 5.000 K
- >= 80
- < 3 SDCM
- screen
- <= 5200 cd/m<sup>2</sup>
- <= 22
- IP 67
- III
- multi-stage switchable
- external
- aluminium; anodised; aluminium coloured
- anodised
- glass screen
- env. 0,53 kg
- built-in plug; M12-A-5
- snap-fit
- A=223 mm
- ADVANCED package

**Recessed luminaire ACURIA.perfect**

**APE 720/850/MS**

114318000-00806667

---

**Waldmann** 

ENGINEERS OF LIGHT