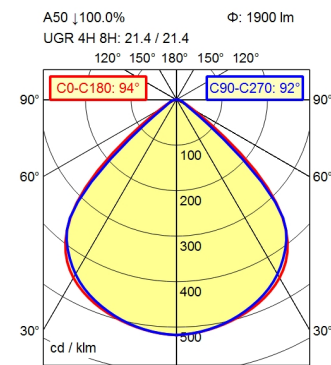
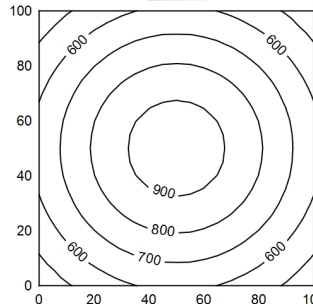


M12-A-5



100 x 100 cm Φ: 1900 lm  
Em: 728 lx  
Emax: 947 lx  
Emin: 493 lx



Height (m)	Beam Diameter (m)	Beam Diameter (m)   (m)	Illuminance (lx)
0.50	1.07	1.07   1.03	3932
1.00	2.13	2.13   2.07	983
1.50	3.20	3.20   3.10	437
2.00	4.27	4.27   4.13	246

- light source
- work equipment
- connected load
- power consumption
- luminous flux
- luminous efficiency
- light distribution
- beam angle
- colour temperature
- colour temperatur
- color rendering index (CRI)
- chromaticity tolerance LED
- glare control
- luminance (L65)
- unified glare rating (4H 8H)
- system of protection
- class of protection
- technology
- operation
- housing
- cover
- weight (net)
- mains lead
- fastening
- dimension
- special features

- LED
- without
- 24 V, DC
- env. 14 W
- approx. 1.900 lm
- approx. 136 lm/W
- direct
- 92°
- neutral white
- approx. 5.000 K
- >= 80
- < 3 SDCM
- screen
- <= 4200 cd/m<sup>2</sup>
- <= 22
- IP 67
- III
- multi-stage switchable
- external
- aluminium; anodised; aluminium coloured
- anodised
- glass screen
- env. 1,34 kg
- built-in plug; M12-A-5
- snap-fit
- A=223 mm
- ADVANCED package

**Recessed luminaire ACURIA.perfect**  
**APE 2000/850/MS**  
114322000-00806653

---