

MASK+ MINI

design by ROBERTO FIORATO



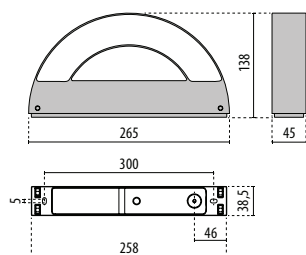
Indoor and outdoor wall-mount fixture, including:

- Painted die-cast aluminium housing
- Glass diffuser, internally painted for homogeneous diffused light
- Mains voltage 220-240V 50/60Hz LED module protected against surges up to 500V
- Silicone gasket
- M versions, i.e. single emission, are supplied with a

- single light source and are designed to allow a single sided light output either upwards or downwards
- Double-emission (B) versions are equipped with two lights in order to provide upward and downward emission
- DETEK versions available on request



- AN-96 / Anthracite gray / Textured
- WH-87 / White / Textured

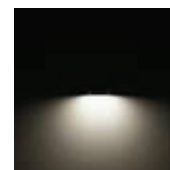


Please visit our web site
www.performanceinlighting.com
 for the latest updated versions available.

MASK+ MINI M

IK05 0.70J xx3

WATTAGE	CLASS	CEC	CRI	KELVIN	COS Φ ≥ 0.9	OPTIC	OPTIC BEAM	LIGHTSOURCE LUMEN OUTPUT	LUMINAIRE LUMEN OUTPUT	L	B	LIFETIME	COLOUR/ RAL	PART NUMBER
Power LED 220-240 V 50/60 Hz														
8 W	I	-	80	4000	✓	S/EW	-	733 lm	200 lm	-	10	54000 h	●	3102527
8 W	I	-	80	3000	✓	S/EW	-	733 lm	200 lm	-	10	54000 h	●	3101602
8 W	I	-	80	4000	✓	S/EW	-	733 lm	200 lm	-	10	54000 h	○	3102528
8 W	I	-	80	3000	✓	S/EW	-	733 lm	200 lm	-	10	54000 h	○	3101603



MASK+ MINI B

IK05 0.70J xx3

WATTAGE	CLASS	CEC	CRI	KELVIN	COS Φ ≥ 0.9	OPTIC	OPTIC BEAM	LIGHTSOURCE LUMEN OUTPUT	LUMINAIRE LUMEN OUTPUT	L	B	LIFETIME	COLOUR/ RAL	PART NUMBER
Power LED 220-240 V 50/60 Hz														
16 W	I	-	80	4000	✓	S/EW	-	1450 lm	390 lm	-	10	54000 h	●	3102529
16 W	I	-	80	3000	✓	S/EW	-	1450 lm	390 lm	-	10	54000 h	●	3101604
16 W	I	-	80	4000	✓	S/EW	-	1450 lm	390 lm	-	10	54000 h	○	3102530
16 W	I	-	80	3000	✓	S/EW	-	1450 lm	390 lm	-	10	54000 h	○	3101605

