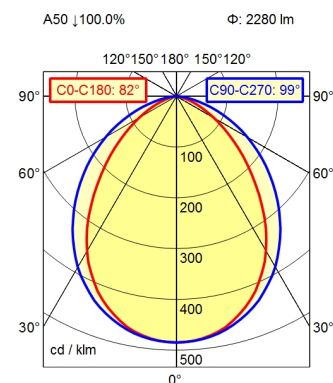
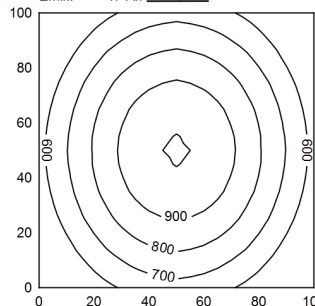




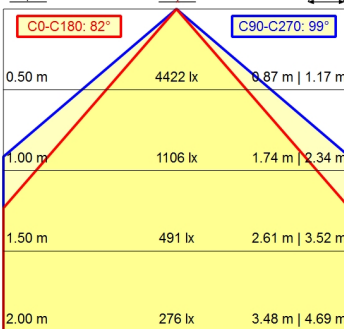
RSFM 4/0,05 P25-1



100 x 100 cm Φ : 2280 lm
Em: 740 lx
Emax: 993 lx
Emin: 474 lx



Φ : 2280 lm E 0°



| | |
|--|--|
| Light source | LED |
| Work equipment | Without |
| Connected load | 20 - 28 V; DC |
| Power consumption | ca. 21,5 W |
| Luminous flux | approx. 2.280 lm |
| Luminous efficiency ¹⁾ | approx. 103 lm/W |
| Light type/-color | Cold white |
| Colour temperatur | approx. 5.000 K |
| Color rendering index | CRI \geq 80 |
| Light distribution | Wide beam; Direct; Symmetric |
| Beam angle | 90° |
| Chromaticity tolerance LED | < 4 SDCM |
| Glare control | without |
| Luminance (L65) | \leq 50.000 cd/m ² |
| UGR class (4H 8H; EN 12464-1) | \leq 28 |
| System of protection/Class | IP 67; III |
| Technology | Switchable |
| Operation | External |
| Emergency lighting | none |
| Housing | Aluminium; Anodised; Aluminium coloured anodised Borosilicate; Clear |
| Light source cover | |
| Mains lead | Built-in plug; RSFM 4/0,05 P25-1 |
| Design | mounted version |
| Fastening | L-angle; Clamp |
| Minimum ambient temperature | 0 °C |
| Maximum ambient temperature | 50 °C |
| EAN | 4013330074593 |
| Weight without/incl. packaging | ca. 1,1 kg; 1,2 kg |
| Dimensions (dimensional drawing) | A=715 mm |
| Packaging dimensions | ca. 843 mm; 100 mm; 88 mm |
| Special features | PWM interface for flashing and dimming; Digital input for cold switching |

¹⁾ For luminaires with separate control gear, the luminous efficacy refers to the luminaire head without control g

Surface-mounted luminaire MACH LED PLUS.forty MLAL 57 S

113164000-00662821

