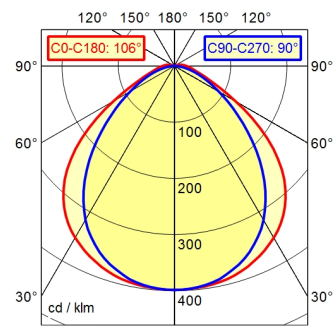
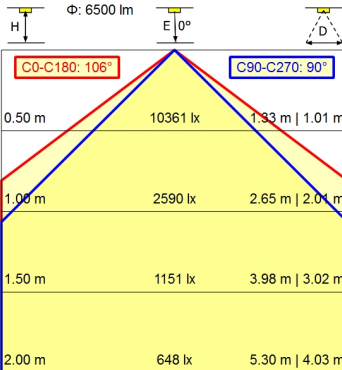
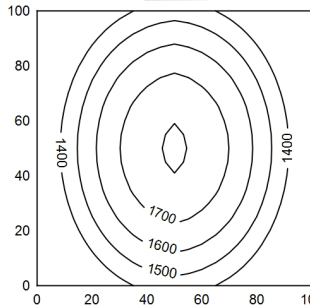


A40 98.6% ↑ 1.4% Φ: 6500 lm



100 x 100 cm Φ: 6500 lm
 Em: 1501 lx
 Emax: 1795 lx
 Emin: 1137 lx



Light source	LED
Work equipment	Without
Connected load	230 V; AC; 50 Hz; 60 Hz
Power consumption	ca. 80 W
Luminous flux	approx. 6.500 lm
Luminous efficiency ¹⁾	approx. 81 lm/W
Light type/-color	Cold white
Colour temperatur	approx. 5.000 K
Color rendering index	CRI ≥ 80
Light distribution	Direct
Direct ratio	approx. 99 %
Beam angle	100°
Chromaticity tolerance LED	< 4 SDCM
Glare control	Diffusor
Luminance (L65)	≤ 18.000 cd/m ²
UGR class (4H 8H; EN 12464-1)	≤ 25
System of protection/Class	IP 67; I
Technology	Switchable
Operation	External
Emergency lighting	none
Housing	Acrylic (PMMA), clear
Light source cover	Acrylic (PMMA)
Mains lead	Connector; series 272
Fastening	Pipe clamp (accessory)
Light output	D=1436 mm
Side part	A with screwed cable gland
Maximum ambient temperature	40 °C
EAN	4013330140281
Weight without/incl. packaging	ca. 4,2 kg; 4,6 kg
Dimensions (dimensional drawing)	A=1490 mm
Packaging dimensions	ca. 1.700 mm; 90 mm; 90 mm
Special features	Light forming; Through-wired

¹⁾ For luminaires with separate control gear, the luminous efficacy refers to the luminaire head without control gear