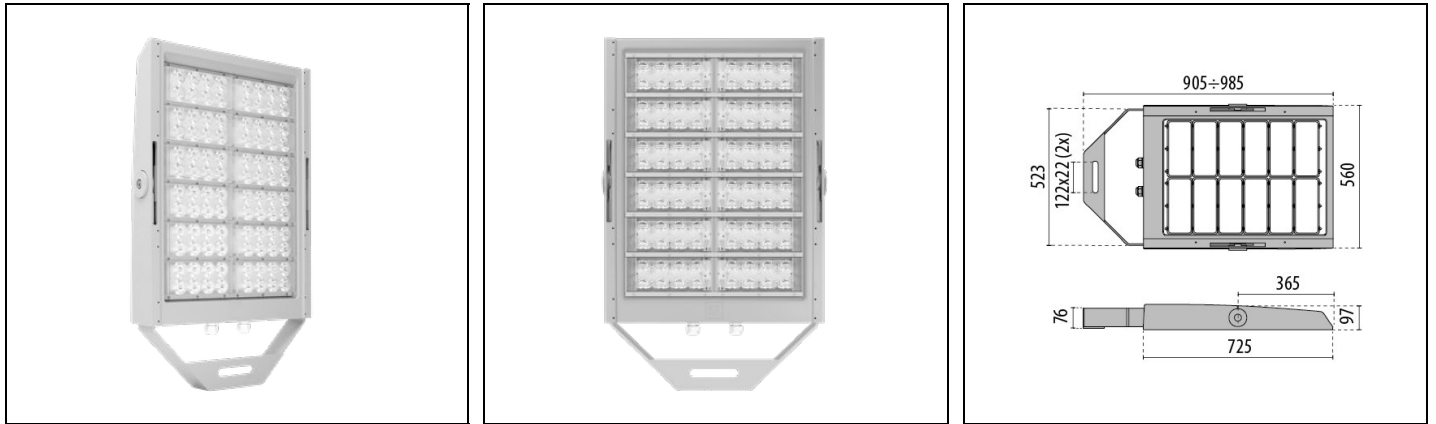


SQUARE PRO 96/3 A/M

Part number 3119522



Description

High-powered LED floodlight for indoor and outdoor, comprising:

- Die-cast aluminium housing, polyester powder coat finish ISO 9227/12944 - ISO 9223 (C5)
- High-transparency polycarbonate optics
- Anti-ageing custom moulded silicone sealing gasket(s)
- Built-in electrical connection box with aluminium cover
- Waterproof M25x1.5 cable gland for cables Ø 10 - Ø 16 mm
- Light beam obtained by the combination of multiple LED modules
- Other colour temperatures (CCT) and colour rendering index (CRI) options available. Consult factory
- Stainless steel locking hardware
- Galvanised powder-coated steel bracket
- Integral graduated goniometer for aiming purposes
- All SQUARE PRO power consumption includes power unit losses
- To connect the SQUARE PRO use the control gears supplied as accessories only
- ON-OFF, dimmable DALI and DMX-RDM control gears can be housed in IP66-rated boxes or on IP20-rated metal plates (for electrical panels). The electrical connection between control gear and floodlight must take place with a maximum cable length distance of 50 m
- Correctly match the floodlight with the control gear. Pay attention to the models and the number of connections: two (2CH), three (3CH) or four (4CH) channels
- Integral surge protection device (SPD) against mains overvoltages up to 10 kV (CM/DM) for every driver unit/box

To maintain the regular updating of our products, PERFORMANCE iN LIGHTING reserves the right to make changes without prior notice. For the most up to date information we always recommend you read the latest version published on the website www.performanceinlighting.com. Delivered luminaire lumen outputs and power consumptions, including losses, are subject to a tolerance of +/- 7%, and unless otherwise stated the values apply to an ambient temperature of 25°C. Terms of warranty are available at <https://www.performanceinlighting.com/qr/company/led-warranty>

Product data

ETIM Group:	EG000027	ETIM Class:	EC001744
-------------	----------	-------------	----------

General information

Lampholder:	LED	Light source:	LED
Lightsource lumen output [lm]:	137991	Luminaire lumen output [lm]:	119577
Luminaire wattage [W]:	835 W	Luminous efficacy [lm/W]:	143
CRI:	70	Colour temperature [K]:	4000
Colour / Finishing:	GR-94 / Metallic grey / Textured	IP degree of protection:	IP66
IK-J-xxIP:	IK07 3J xx5	Protection class:	I
Optic:	A45/M - Asymmetric Medium	Net weight [kg]:	22.5
Overall length [mm]:	560	Overall width [mm]:	985
Overall height [mm]:	97		

Mechanical features

Shape:	Rectangular	Housing material:	Aluminium
Diffuser material:	Plastic	Glow wire test [°C]:	850 °C
Frontal exposed area [m ²]:	0.04	Lateral exposed area [m ²]:	0.08
Top exposed area [m ²]:	0.42		

Installation

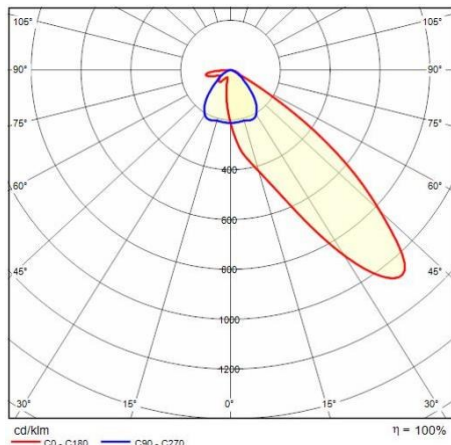
Application area:	Outdoor	Mounting type:	Sports / High Powered Floodlighting
Min. ambient temperature [°C]:	-40	Max. ambient temperature [°C]:	45
Min. distance from lighted object [m]:	1.00		

Light features

MacAdam:	3	Lumen maintenance:	L90B10@140000h
Distribution of light emission:	Direct	DFF - Downward Flux Fraction [%]:	100
UFF - Upward Flux Fraction [%]:	0	Luminous Intensity Class:	G2
Zero light pollution (ULR = 0%):		IPEA* (road lighting):	A3+
IPEA* (large areas, roundabouts):	A6+	IPEA* (cycle-pedestrian):	A4+
IPEA* (green areas):	A4+	IPEA* (historic city centers):	A8+

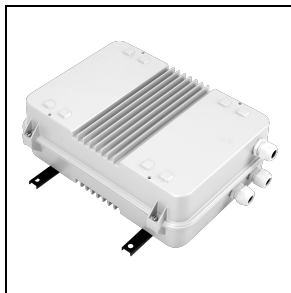
To maintain the regular updating of our products, PERFORMANCE iN LIGHTING reserves the right to make changes without prior notice. For the most up to date information we always recommend you read the latest version published on the website www.performanceinlighting.com. Delivered luminaire lumen outputs and power consumptions, including losses, are subject to a tolerance of +/- 7%, and unless otherwise stated the values apply to an ambient temperature of 25°C. Terms of warranty are available at <https://www.performanceinlighting.com/qr/company/led-warranty>

Photometric data



Control gear

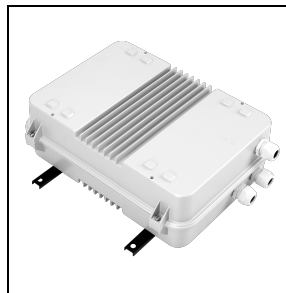
Drivers box IP66 - SQUARE PRO 96/3 - A/I - A/M - C/I - ELL



14474094

Drivers box 900 W - 1.4A - 3CH - 220-240 V 50/60 Hz

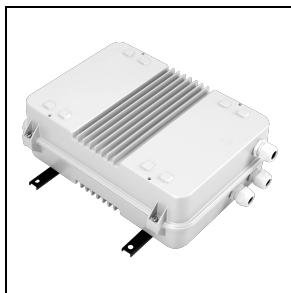
■ GR-94 / Metallic grey



14474194

Drivers box 900 W - 1.4A - 3CH - DALI 220-240 V 50/60 Hz

■ GR-94 / Metallic grey

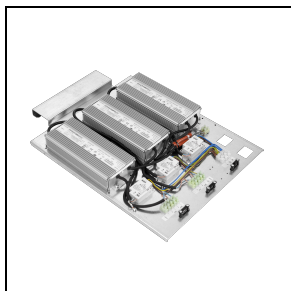


3119980

DRIVER BOX 900 W 1.4 A - 3CH - DMX 220-240 V

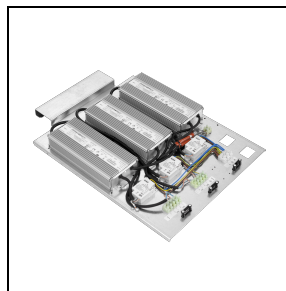
■ GR-94 / Metallic grey

Drivers unit IP20 - SQUARE PRO 96/3 - A/I - A/M - C/I - ELL



14473601

Drivers unit 900 W - 1.4A - 3CH - 220-240 V 50/60 Hz



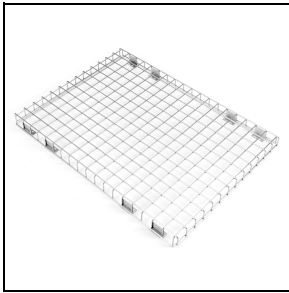
3120126

DRIVER UNIT 900 W 1.4 A - 3CH - DMX 220-240 V

To maintain the regular updating of our products, PERFORMANCE iN LIGHTING reserves the right to make changes without prior notice. For the most up to date information we always recommend you read the latest version published on the website www.performanceinlighting.com. Delivered luminaire lumen outputs and power consumptions, including losses, are subject to a tolerance of +/- 7%, and unless otherwise stated the values apply to an ambient temperature of 25°C. Terms of warranty are available at <https://www.performanceinlighting.com/qr/company/led-warranty>

Optional accessories

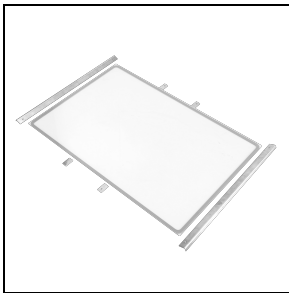
SQUARE PRO



14474201

Protective grid SQUARE PRO

SQUARE PRO (max 840 W)



14474494

Protective glass SQUARE PRO (max 840 W)

■ GR-94 / Metallic grey