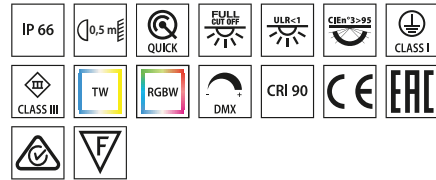


# TYK+ 10



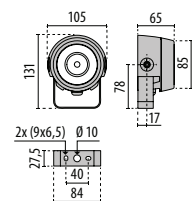
■ AN-96 / Anthracite gray / Textured

Scan the QR-code for the latest information



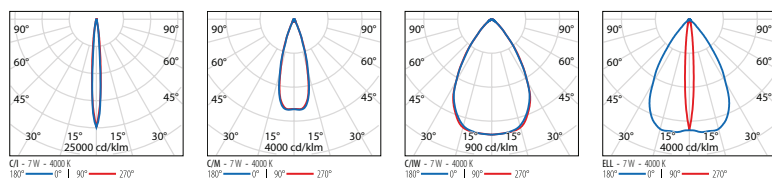
LED floodlight for indoor and outdoor, comprising:

- Die-cast aluminium housing, polyester powder coat finish ISO 9227/12944 - ISO 9223 (C5)
- Extra-clear, toughened, flat glass diffuser, silk-screened on the inside
- Glazing diffuser permanently sealed to the housing trough high-temperature resistant silicone
- High-transparency polycarbonate optics
- Optics assembly specifically developed for architectural lighting: custom-made optics achieve targeted illumination with precisely controlled beams without chromatic aberration
- Anti-ageing custom moulded silicone sealing gasket(s) with resilient elastic return capacity
- Tear-proof nickelled brass cable gland M16x1.5 for cables Ø 5 mm - Ø 10 mm
- Stainless steel locking hardware
- Stainless steel wall-mounting bracket
- Complete with 1 m factory pre-wired cable H05RN-F 3G1 mm²
- Integral graduated stainless steel goniometer for precise aimings
- The snoot accessory is compatible with narrow-beam (C/I) optics
- Built-in driver
- For ELL 35x65 / 65x35 versions consult factory
- The TYK+ 10 RM versions are in class III, with no output cable and to be solely feed with the power supply units available as accessories
- Dimmable DALI2 power supply units are available, IP66-rated waterproof in powder-coated die-cast aluminium box or on IP20-rated plate to be incorporated in waterproof electrical cabinets
- The electrical connection between the power supply units and the related floodlights to be made with a maximum cable length of 20 metres
- RGBW and Tunable White versions to be powered with SELV drivers 48V DC, available as accessories to be ordered separately. Colour management through DMX interface
- DMX signal generator for RGBW and Tunable White versions to be ordered separately



TYK+ 10

## Identifying and classifying our optics



## TYK+ 10 C/I

IP66 - IK06

LUMINAIRE WATTAGE (W)	CLASS	ENEC	CRI	KELVIN	OPTIC	BEAM ANGLE	LIGHTSOURCE LUMEN OUTPUT (lm)	LUMINAIRE LUMEN OUTPUT (lm)	COLOUR / FINISH	PART NUMBER	UKCA
<b>Power LED 220-240 V 50/60 Hz</b>											
7	I	-	80	4000	C/I	10°	700	560,17	■	<b>3107283</b>	✓
7	I	-	80	3000	C/I	10°	650	518,9	■	<b>3107284</b>	✓

2700K versions are available on web



## TYK+ 10 C/M

IP66 - IK06

LUMINAIRE WATTAGE (W)	CLASS	ENEC	CRI	KELVIN	OPTIC	BEAM ANGLE	LIGHTSOURCE LUMEN OUTPUT (lm)	LUMINAIRE LUMEN OUTPUT (lm)	COLOUR / FINISH	PART NUMBER	UKCA
<b>Power LED 220-240 V 50/60 Hz</b>											
7	I	-	80	4000	C/M	34°	700	598,1	■	<b>3107286</b>	✓
7	I	-	80	3000	C/M	34°	650	554,04	■	<b>3107287</b>	✓

2700K versions are available on web



## TYK+ 10 RGBW C/M

IP66 - IK06

LUMINAIRE WATTAGE (W)	CLASS	ENEC	CRI	KELVIN	OPTIC	BEAM ANGLE	LIGHTSOURCE LUMEN OUTPUT (lm)	LUMINAIRE LUMEN OUTPUT (lm)	COLOUR / FINISH	PART NUMBER	UKCA
<b>RGBW LED</b>											
6	III	-	80	rgbw 4000	C/M	30°	196	170	■	<b>3113654</b>	✓

2700K versions are available on web



## TYK+ 10 TW C/M

IP66 - IK06

LUMINAIRE WATTAGE (W)	CLASS	ENEC	CRI	KELVIN	OPTIC	BEAM ANGLE	LIGHTSOURCE LUMEN OUTPUT (lm)	LUMINAIRE LUMEN OUTPUT (lm)	COLOUR / FINISH	PART NUMBER	UKCA
<b>TunableWhite Power LED</b>											
5	III	-	90	tw 2700-5700	C/M	30°	500	443	■	<b>3113655</b>	✓

2700K versions are available on web



## TYK+ 10 C/IW

IP66 - IK06

LUMINAIRE WATTAGE (W)	CLASS	ENEC	CRI	KELVIN	OPTIC	BEAM ANGLE	LIGHTSOURCE LUMEN OUTPUT (lm)	LUMINAIRE LUMEN OUTPUT (lm)	COLOUR / FINISH	PART NUMBER	UKCA
<b>Power LED 220-240 V 50/60 Hz</b>											
7	I	-	80	4000	C/IW	65°	700	585,37	■	<b>3107289</b>	✓
7	I	-	80	3000	C/IW	65°	650	542,29	■	<b>3107290</b>	✓

2700K versions are available on web



## TYK+ 10 ELL

IP66 - IK06

LUMINAIRE WATTAGE (W)	CLASS	ENEC	CRI	KELVIN	OPTIC	BEAM ANGLE	LIGHTSOURCE LUMEN OUTPUT (lm)	LUMINAIRE LUMEN OUTPUT (lm)	COLOUR / FINISH	PART NUMBER	UKCA
<b>Power LED 220-240 V 50/60 Hz</b>											
7	I	-	80	4000	ELL	9°x70°	700	473,9	■	<b>3107292</b>	✓
7	I	-	80	4000	ELL	70°x9°	700	473	■	<b>3107295</b>	✓
7	I	-	80	3000	ELL	9°x70°	650	439	■	<b>3107293</b>	✓
7	I	-	80	3000	ELL	70°x9°	650	439	■	<b>3107296</b>	✓

2700K versions are available on web



## TYK+ 10 RM C/I

IP66 - IK06

LUMINAIRE WATTAGE [W]	CLASS	ENEC	CRI	KELVIN	OPTIC	BEAM ANGLE	LIGHTSOURCE LUMEN OUTPUT [lm]	LUMINAIRE LUMEN OUTPUT [lm]	COLOUR / FINISH	PART NUMBER	UKCA
<b>Power LED - 1CH</b>											
15	III	-	80	4000	C/I	10°	1240	837	■	<b>3112335</b>	✓
15	III	-	80	3000	C/I	10°	1180	735,36	■	<b>3112336</b>	✓



## TYK+ 10 RM C/M

IP66 - IK06

LUMINAIRE WATTAGE [W]	CLASS	ENEC	CRI	KELVIN	OPTIC	BEAM ANGLE	LIGHTSOURCE LUMEN OUTPUT [lm]	LUMINAIRE LUMEN OUTPUT [lm]	COLOUR / FINISH	PART NUMBER	UKCA
<b>Power LED - 1CH</b>											
15	III	-	80	4000	C/M	34°	1240	893,67	■	<b>3112338</b>	✓
15	III	-	80	3000	C/M	34°	1180	827,86	■	<b>3112339</b>	✓



## TYK+ 10 RM C/IW

IP66 - IK06

LUMINAIRE WATTAGE [W]	CLASS	ENEC	CRI	KELVIN	OPTIC	BEAM ANGLE	LIGHTSOURCE LUMEN OUTPUT [lm]	LUMINAIRE LUMEN OUTPUT [lm]	COLOUR / FINISH	PART NUMBER	UKCA
<b>Power LED - 1CH</b>											
15	III	-	80	4000	C/IW	65°	1240	874,65	■	<b>3112341</b>	✓
15	III	-	80	3000	C/IW	65°	1180	810,24	■	<b>3112342</b>	✓



## TYK+ 10 RM ELL

IP66 - IK06

LUMINAIRE WATTAGE [W]	CLASS	ENEC	CRI	KELVIN	OPTIC	BEAM ANGLE	LIGHTSOURCE LUMEN OUTPUT [lm]	LUMINAIRE LUMEN OUTPUT [lm]	COLOUR / FINISH	PART NUMBER	UKCA
<b>Power LED - 1CH</b>											
15	III	-	80	4000	ELL	9°x70°	1240	708,11	■	<b>3112344</b>	✓
15	III	-	80	4000	ELL	70°x9°	1240	709,59	■	<b>3112347</b>	✓
15	III	-	80	3000	ELL	9°x70°	1180	655,96	■	<b>3112345</b>	✓
15	III	-	80	3000	ELL	70°x9°	1180	657,33	■	<b>3112348</b>	✓

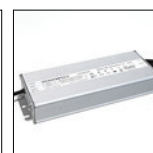


## Control gear

DESCRIPTION	COLOR	PART NUMBER	UKCA
<b>TYK+10 RGBW / TYK+10 TW</b>			
Driver - CV 100 W - 48 V kit		<b>310950</b>	✓
Driver - CV 500 W - 48 V kit		<b>310951</b>	✓
Controller DMX touch black		<b>3117845</b>	✓
Controller DMX touch white		<b>3117844</b>	✓
<b>TYK+ 10 RM</b>			
DRIVER UNIT 20 W 1A - 1CH - DALI		<b>3112413</b>	✓
Driver Box 20 W 1A - 1CH - DALI	■	<b>3112468</b>	✓



310950



310951



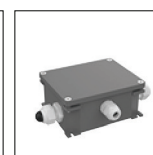
3117845



3117844



3112413



3112468

## Optional accessories

DESCRIPTION	COLOR	PART NUMBER	UKCA
<b>TYK+ 10 C/I</b>			
Anti-glare snoot	■	<b>3107463</b>	✓
<b>TYK+ 10</b>			
Barndoors painted	■	<b>3112969</b>	✓
Ground spike	■	<b>700191</b>	✓
Extra rotation bracket +25°/-90°		<b>3108556</b>	✓



3107463



3112969

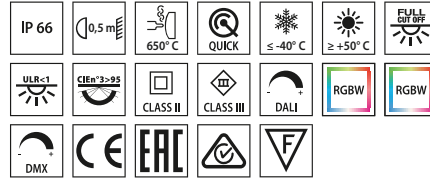


700191



3108556

# TYK+ 20



■ AN-96 / Anthracite gray / Textured

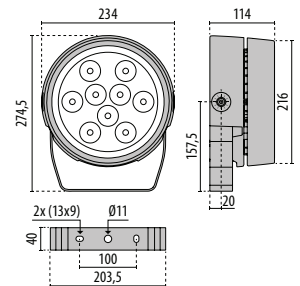
Scan the QR-code for the latest information

LED floodlight for indoor and outdoor, comprising:

- Die-cast aluminium separate housing compartments to maximise heat dissipation between electronic components and the LEDs, polyester powder coat finish ISO 9227/12944 - ISO 9223 (C5)
- Extra-clear, toughened, flat glass diffuser, silk-screened on the inside
- Glazing diffuser permanently sealed to the housing trough high-temperature resistant silicone
- High-transparency polycarbonate optics
- Optics assembly specifically developed for architectural lighting: custom-made optics achieve targeted illumination with precisely controlled beams without chromatic aberration
- Anti-ageing custom moulded silicone sealing gasket(s) with resilient elastic return capacity
- Tear-proof nickelled brass cable gland M20x1.5 for cables Ø 10 mm - Ø 14 mm
- Driver integral surge protection up to 6 kV (DM)
- Stainless steel locking hardware
- Stainless steel wall-mounting bracket
- Integral graduated stainless steel goniometer for precise aimings
- The snoot accessory is compatible with narrow-beam (C/I) optics
- Static ON/OFF or dimmable DALI options available
- For ELL 65x35 / 9x70 / 70x9 versions consult factory
- The RGBW versions to be powered with 48V DC SELV drivers, available as accessories. Colour management through DMX interface
- DMX signal generator for RGBW versions available (ordered separately)

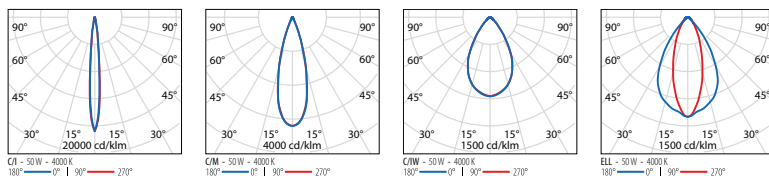


Oscar's church - Stockholm - Sweden



TYK+ 20

Identifying and classifying our optics



## TYK+ 20 C/I

IP66 - IK07 - 650 °C

LUMINAIRE WATTAGE [W]	CLASS	ENEC	CRI	KELVIN	OPTIC	BEAM ANGLE	LIGHTSOURCE LUMEN OUTPUT [lm]	LUMINAIRE LUMEN OUTPUT [lm]	COLOUR / FINISH	PART NUMBER	UKCA
<b>Power LED 220-240 V 50/60 Hz</b>											
50	II	-	80	4000	C/I	10°	5880	4593,08	■	<b>3107328</b>	✓
50	II	-	80	3000	C/I	10°	5440	4254,82	■	<b>3107329</b>	✓
35	II	-	80	4000	C/I	10°	4165	3303,63	■	<b>3107298</b>	✓
35	II	-	80	3000	C/I	10°	3858	3060,34	■	<b>3107299</b>	✓
<b>Power LED - dimmable DALI 220-240 V 50/60 Hz</b>											
50	II	-	80	4000	C/I	10°	5880	4593,08	■	<b>3107343</b>	✓
50	II	-	80	3000	C/I	10°	5440	4254,82	■	<b>3107344</b>	✓
35	II	-	80	4000	C/I	10°	4165	3303,63	■	<b>3107313</b>	✓
35	II	-	80	3000	C/I	10°	3858	3060,34	■	<b>3107314</b>	✓

2700K versions are available on web

## TYK+ 20 C/M

IP66 - IK07 - 650 °C

LUMINAIRE WATTAGE [W]	CLASS	ENEC	CRI	KELVIN	OPTIC	BEAM ANGLE	LIGHTSOURCE LUMEN OUTPUT [lm]	LUMINAIRE LUMEN OUTPUT [lm]	COLOUR / FINISH	PART NUMBER	UKCA
<b>Power LED 220-240 V 50/60 Hz</b>											
50	II	-	80	4000	C/M	34°	5880	5030,99	■	<b>3107331</b>	✓
50	II	-	80	3000	C/M	34°	5440	4660,49	■	<b>3107332</b>	✓
35	II	-	80	4000	C/M	34°	4165	3676,39	■	<b>3107301</b>	✓
35	II	-	80	3000	C/M	34°	3858	3405,64	■	<b>3107302</b>	✓
<b>Power LED - dimmable DALI 220-240 V 50/60 Hz</b>											
50	II	-	80	4000	C/M	34°	5880	5030,99	■	<b>3107346</b>	✓
50	II	-	80	3000	C/M	34°	5440	4660,49	■	<b>3107347</b>	✓
35	II	-	80	4000	C/M	34°	4165	3676,39	■	<b>3107316</b>	✓
35	II	-	80	3000	C/M	34°	3858	3405,64	■	<b>3107317</b>	✓

2700K versions are available on web

## TYK+ 20 RGBW C/M

IP66 - IK07 - 650 °C

LUMINAIRE WATTAGE [W]	CLASS	ENEC	CRI	KELVIN	OPTIC	BEAM ANGLE	LIGHTSOURCE LUMEN OUTPUT [lm]	LUMINAIRE LUMEN OUTPUT [lm]	COLOUR / FINISH	PART NUMBER	UKCA
<b>RGBW LED</b>											
37	III	-	80	rgbw 4000	C/M	30°	1832	1477	■	<b>3112196</b>	✓

2700K versions are available on web

## TYK+ 20 C/IW

IP66 - IK07 - 650 °C

LUMINAIRE WATTAGE [W]	CLASS	ENEC	CRI	KELVIN	OPTIC	BEAM ANGLE	LIGHTSOURCE LUMEN OUTPUT [lm]	LUMINAIRE LUMEN OUTPUT [lm]	COLOUR / FINISH	PART NUMBER	UKCA
<b>Power LED 220-240 V 50/60 Hz</b>											
50	II	-	80	4000	C/IW	65°	5880	4968,48	■	<b>3107334</b>	✓
50	II	-	80	3000	C/IW	65°	5440	4602,58	■	<b>3107335</b>	✓
35	II	-	80	4000	C/IW	65°	4165	3569,26	■	<b>3107304</b>	✓
35	II	-	80	3000	C/IW	65°	3858	3306,4	■	<b>3107305</b>	✓
<b>Power LED - dimmable DALI 220-240 V 50/60 Hz</b>											
50	II	-	80	4000	C/IW	65°	5880	4968,48	■	<b>3107349</b>	✓
50	II	-	80	3000	C/IW	65°	5440	4602,58	■	<b>3107350</b>	✓
35	II	-	80	4000	C/IW	65°	4165	3569,26	■	<b>3107319</b>	✓
35	II	-	80	3000	C/IW	65°	3858	3306,4	■	<b>3107320</b>	✓

2700K versions are available on web

## TYK+ 20 ELL

IP66 - IK07 - 650 °C

LUMINAIRE WATTAGE [W]	CLASS	ENEC	CRI	KELVIN	OPTIC	BEAM ANGLE	LIGHTSOURCE LUMEN OUTPUT [lm]	LUMINAIRE LUMEN OUTPUT [lm]	COLOUR / FINISH	PART NUMBER	UKCA
<b>Power LED 220-240 V 50/60 Hz</b>											
50	II	-	80	4000	ELL	35°x65°	5880	3124,96	■	<b>3107337</b>	✓
50	II	-	80	3000	ELL	35°x65°	5440	2894,82	■	<b>3107338</b>	✓
35	II	-	80	4000	ELL	35°x65°	4165	2245,06	■	<b>3107307</b>	✓
35	II	-	80	3000	ELL	35°x65°	3858	2080,01	■	<b>3107308</b>	✓
<b>Power LED - dimmable DALI 220-240 V 50/60 Hz</b>											
50	II	-	80	4000	ELL	35°x65°	5880	3124,96	■	<b>3107352</b>	✓
50	II	-	80	3000	ELL	35°x65°	5440	2894,82	■	<b>3107353</b>	✓
35	II	-	80	4000	ELL	35°x65°	4165	2245,05	■	<b>3107322</b>	✓
35	II	-	80	3000	ELL	35°x65°	3858	2080,01	■	<b>3107323</b>	✓

2700K versions are available on web

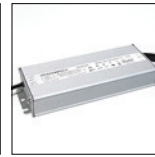


## Control gear

DESCRIPTION	COLOR	PART NUMBER	UKCA
<b>TYK+ 20 RGBW</b>			
Driver - CV 100 W - 48 V kit		<b>310950</b>	✓
Driver - CV 500 W - 48 V kit		<b>310951</b>	✓
Controller DMX touch white		<b>3117844</b>	✓
Controller DMX touch black		<b>3117845</b>	✓



310950



310951



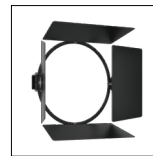
3117844



3117845

## Optional accessories

DESCRIPTION	COLOR	PART NUMBER	UKCA
<b>TYK+ 20</b>			
Barndoors painted	■	<b>3112970</b>	✓
Anti-glare snoot	■	<b>3107466</b>	✓
Two-axis rotation bracket for gliding support		<b>3107473</b>	✓
Extra rotation bracket +55°/-90°		<b>3108557</b>	✓
Gliding support made of painted aluminium for the installation on Ø 60 mm posts	■	<b>14099896</b>	✓
Gliding support made of painted aluminium for the installation on Ø 90 mm posts	■	<b>14099696</b>	✓
Gliding support made of painted aluminium for the installation on 60-76 mm Ø posts. 1 luminaire	■	<b>14029094</b>	✓
Gliding support made of painted aluminium for the installation on 60-76 mm Ø posts. 2 opposed luminaires	■	<b>14047194</b>	✓



3112970



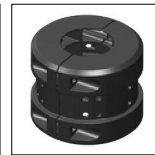
3107466



3107473



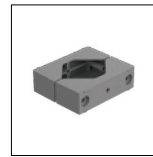
3108557



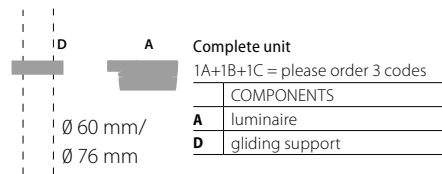
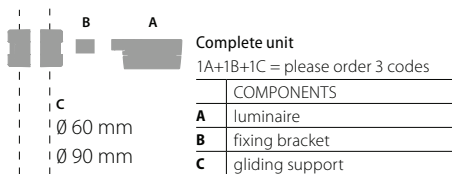
14099896



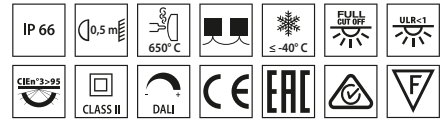
14099696



14029094  
14047194



# TYK+ 30



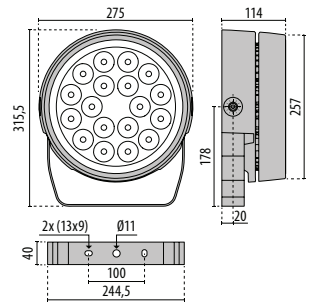
Scan the QR-code for the latest information

■ AN-96 / Anthracite gray / Textured

- LED floodlight for indoor and outdoor, comprising:
- Die-cast aluminium separate housing compartments to maximise heat dissipation between electronic components and the LEDs, polyester powder coat finish ISO 9227/12944 - ISO 9223 (C5)
  - Extra-clear, toughened, flat glass diffuser, silk-screened on the inside
  - Glazing diffuser permanently sealed to the housing trough high-temperature resistant silicone
  - High-transparency polycarbonate optics
  - Optics assembly specifically developed for architectural lighting: custom-made optics achieve targeted illumination with precisely controlled beams without chromatic aberration
  - Anti-ageing custom moulded silicone sealing gasket(s) with resilient elastic return capacity
  - Tear-proof nickelled brass cable gland M20x1.5 for cables Ø 10 mm-Ø 14 mm
  - Each luminaire is supplied with two IP 68 cable gland allowing a single or a through power connection
  - Driver integral surge protection up to 6 kV (DM)
  - Stainless steel locking hardware
  - Stainless steel wall-mounting bracket
  - Integral graduated stainless steel goniometer for precise aimings
  - The snoot accessory is compatible with narrow-beam (C/I) optics
  - Static ON/OFF or dimmable DALI options available
  - For ELL 65x35 / 9x70 / 70x9 versions consult factory

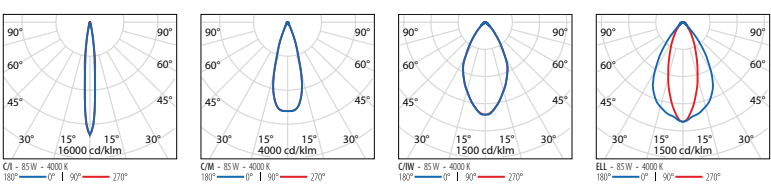


Commercial Building Warmteservice - Gouda - Netherlands



TYK

## Identifying and classifying our optics



## TYK+ 30 C/I

IP66 - IK09 - 650 °C

LUMINAIRE WATTAGE (W)	CLASS	ENEC	CRI	KELVIN	OPTIC	BEAM ANGLE	LIGHTSOURCE LUMEN OUTPUT (lm)	LUMINAIRE LUMEN OUTPUT (lm)	COLOUR / FINISH	PART NUMBER	UKCA
<b>Power LED 220-240 V 50/60 Hz</b>											
85	II	-	80	4000	C/I	10°	10650	8215,4	■	<b>3107358</b>	✓
85	II	-	80	3000	C/I	10°	9980	7610,38	■	<b>3107359</b>	✓

### Power LED - dimmable DALI 220-240 V 50/60 Hz

85	II	-	80	4000	C/I	10°	10650	8215,4	■	<b>3107373</b>	✓
85	II	-	80	3000	C/I	10°	9980	7610,38	■	<b>3107374</b>	✓

2700K versions are available on web

## TYK+ 30 C/M

IP66 - IK09 - 650 °C

LUMINAIRE WATTAGE (W)	CLASS	ENEC	CRI	KELVIN	OPTIC	BEAM ANGLE	LIGHTSOURCE LUMEN OUTPUT (lm)	LUMINAIRE LUMEN OUTPUT (lm)	COLOUR / FINISH	PART NUMBER	UKCA
<b>Power LED 220-240 V 50/60 Hz</b>											
85	II	-	80	4000	C/M	34°	10650	8788,01	■	<b>3107361</b>	✓
85	II	-	80	3000	C/M	34°	9980	8140,81	■	<b>3107362</b>	✓

### Power LED - dimmable DALI 220-240 V 50/60 Hz

85	II	-	80	4000	C/M	34°	10650	8788,01	■	<b>3107376</b>	✓
85	II	-	80	3000	C/M	34°	9980	8140,81	■	<b>3107377</b>	✓

2700K versions are available on web

## TYK+ 30 C/IW

IP66 - IK09 - 650 °C

LUMINAIRE WATTAGE (W)	CLASS	ENEC	CRI	KELVIN	OPTIC	BEAM ANGLE	LIGHTSOURCE LUMEN OUTPUT (lm)	LUMINAIRE LUMEN OUTPUT (lm)	COLOUR / FINISH	PART NUMBER	UKCA
<b>Power LED 220-240 V 50/60 Hz</b>											
85	II	-	80	4000	C/IW	65°	10650	8612,89	■	<b>3107364</b>	✓
85	II	-	80	3000	C/IW	65°	9980	7978,58	■	<b>3107365</b>	✓

### Power LED - dimmable DALI 220-240 V 50/60 Hz

85	II	-	80	4000	C/IW	65°	10650	8612,89	■	<b>3107379</b>	✓
85	II	-	80	3000	C/IW	65°	9980	7978,58	■	<b>3107380</b>	✓

2700K versions are available on web

## TYK+ 30 ELL

IP66 - IK09 - 650 °C

LUMINAIRE WATTAGE (W)	CLASS	ENEC	CRI	KELVIN	OPTIC	BEAM ANGLE	LIGHTSOURCE LUMEN OUTPUT (lm)	LUMINAIRE LUMEN OUTPUT (lm)	COLOUR / FINISH	PART NUMBER	UKCA
<b>Power LED 220-240 V 50/60 Hz</b>											
85	II	-	80	4000	ELL	35°x65°	10650	5558,53	■	<b>3107367</b>	✓
85	II	-	80	3000	ELL	35°x65°	9980	5149,17	■	<b>3107368</b>	✓

### Power LED - dimmable DALI 220-240 V 50/60 Hz

85	II	-	80	4000	ELL	35°x65°	10650	5558,53	■	<b>3107382</b>	✓
85	II	-	80	3000	ELL	35°x65°	9980	5149,17	■	<b>3107383</b>	✓

2700K versions are available on web

## Optional accessories

DESCRIPTION	COLOR	PART NUMBER	UKCA
<b>TYK+ 30 C/I</b>			
Anti-glare snoot	■	<b>3107469</b>	✓
<b>TYK+ 30</b>			
Two-axis rotation bracket for gliding support		<b>3107473</b>	✓
Extra rotation bracket +55°/-90°		<b>3108558</b>	✓
Gliding support made of painted aluminium for the installation on Ø 60 mm posts	■	<b>14099896</b>	✓
Gliding support made of painted aluminium for the installation on Ø 90 mm posts	■	<b>14099696</b>	✓
Gliding support made of painted aluminium for the installation on 60-76 mm Ø posts. 1 luminaire	■	<b>14029094</b>	✓
Gliding support made of painted aluminium for the installation on 60-76 mm Ø posts. 2 opposed luminaires	■	<b>14047194</b>	✓

