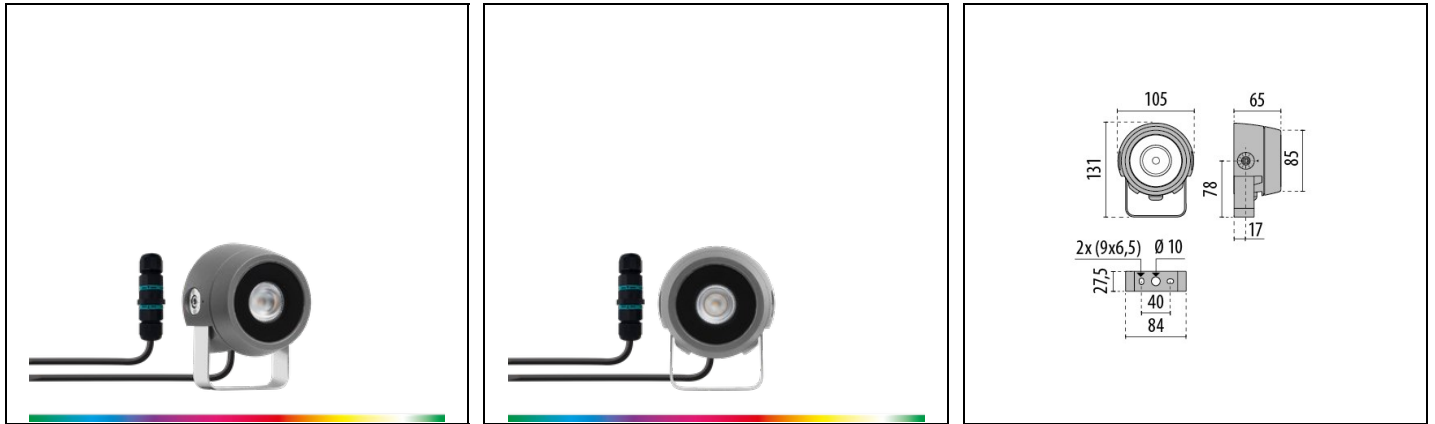


# TYK+ 10 RGBW C/M

Part number 3113654



## Description

LED floodlight for indoor and outdoor, comprising:

- Die-cast aluminium housing, polyester powder coat finish ISO 9227/12944 - ISO 9223 (C5)
- Extra-clear, toughened, flat glass diffuser, silk-screened on the inside
- Glazing diffuser permanently sealed to the housing through high-temperature resistant silicone
- High-transparency polycarbonate optics
- Optics assembly specifically developed for architectural lighting: custom-made optics achieve targeted illumination with precisely controlled beams without chromatic aberration
- Anti-ageing custom moulded silicone sealing gasket(s) with resilient elastic return capacity
- Tear-proof nickelled brass cable gland M16x1.5 for cables Ø 5 mm- Ø 10 mm
- Stainless steel locking hardware
- Stainless steel wall-mounting bracket
- Integral graduated stainless steel goniometer for precise aimings
- IP-rated external socket-plug fast connector (QUICK), complete with factory pre-wired cable
- RGBW and Tunable White versions to be powered with SELV drivers 48V DC, available as accessories to be ordered separately. Colour management through DMX interface
- DMX signal generator for RGBW and Tunable White versions to be ordered separately

## Product data

ETIM Group:	EG000027	ETIM Class:	EC001744
-------------	----------	-------------	----------

## General information

Lampholder:	LED	Light source:	LED
Lightsource lumen output [lm]:	196	Luminaire lumen output [lm]:	170
Luminaire wattage [W]:	6 W	Luminous efficacy [lm/W]:	28
CRI:	80	Colour temperature [K]:	rgbw 4000
Colour / Finishing:	AN-g6 / Anthracite gray / Textured	IP degree of protection:	IP66
IK-J-xxIP:	IK06 1.2J xx3	Protection class:	III
Optic:	C/M - Circular Medium	Beam angle:	30°
Net weight [kg]:	1.018	Overall diameter [mm]:	105
Overall length [mm]:	105	Overall width [mm]:	131
Overall height [mm]:	65		

## Mechanical features

Shape:	Round ≤ 150 mm	Housing material:	Aluminium
Diffuser material:	Glass	Frontal exposed area [m²]:	0.01
Lateral exposed area [m²]:	0.01	Top exposed area [m²]:	0.01

## Electrical features

Voltage type:	DC	Input frequency [Hz]:	-
Input voltage [V DC]:	48		

## Installation

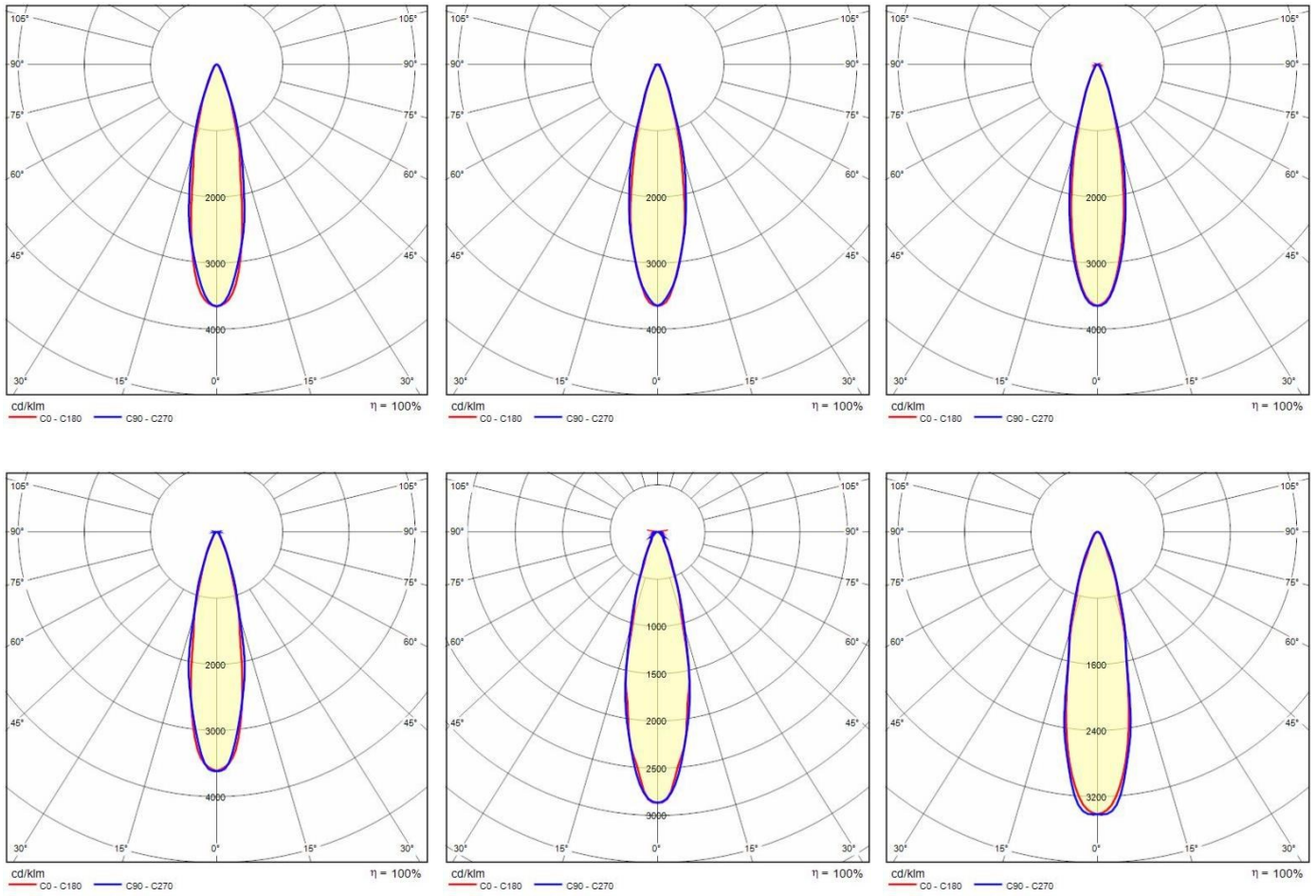
Application area:	Outdoor	Mounting type:	Feature Spot Lights
Min. ambient temperature [°C]:	-20	Max. ambient temperature [°C]:	30

## Light features

MacAdam:	3	Lumen maintenance:	L90B10@24000h
Distribution of light emission:	Direct	UGR max.:	0.0
Luminous Intensity Class:	G*6	Zero light pollution (ULR = 0%):	

To maintain the regular updating of our products, PERFORMANCE iN LIGHTING reserves the right to make changes without prior notice. For the most up to date information we always recommend you read the latest version published on the website [www.performanceinlighting.com](http://www.performanceinlighting.com). Delivered luminaire lumen outputs and power consumptions, including losses, are subject to a tolerance of +/- 7%, and unless otherwise stated the values apply to an ambient temperature of 25°C. Terms of warranty are available at <https://www.performanceinlighting.com/qr/company/led-warranty>

Photometric data



Control gear

TYK+10 RGBW / TYK+10 TW



**310950**  
Driver - CV 100 W - 48 V kit

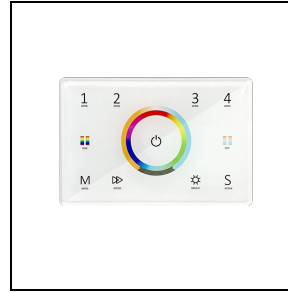


**310951**  
Driver - CV 500 W - 48 V kit

To maintain the regular updating of our products, PERFORMANCE in LIGHTING reserves the right to make changes without prior notice. For the most up to date information we always recommend you read the latest version published on the website [www.performanceinlighting.com](http://www.performanceinlighting.com). Delivered luminaire lumen outputs and power consumptions, including losses, are subject to a tolerance of +/- 7%, and unless otherwise stated the values apply to an ambient temperature of 25°C. Terms of warranty are available at <https://www.performanceinlighting.com/qr/company/led-warranty>



**3117845**  
Controller DMX touch black  
■ BK-81



**3117844**  
Controller DMX touch white  
□ WH-87

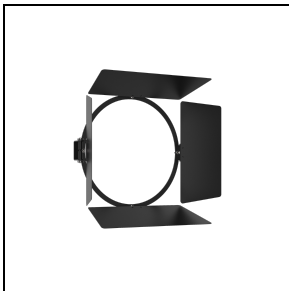
TYK+ 10



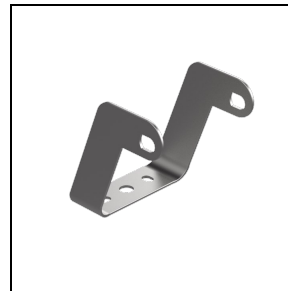
**3115612**  
USB key EcoEcco

Optional accessories

TYK+ 10



**3112969**  
Barndoors painted  
■ BK-81



**3108556**  
Extra rotation bracket +25°/-90°  
■ INOX



**700191**  
Ground spike  
■ BK-81

To maintain the regular updating of our products, PERFORMANCE iN LIGHTING reserves the right to make changes without prior notice. For the most up to date information we always recommend you read the latest version published on the website [www.performanceinlighting.com](http://www.performanceinlighting.com). Delivered luminaire lumen outputs and power consumptions, including losses, are subject to a tolerance of +/- 7%, and unless otherwise stated the values apply to an ambient temperature of 25°C. Terms of warranty are available at <https://www.performanceinlighting.com/qr/company/led-warranty>